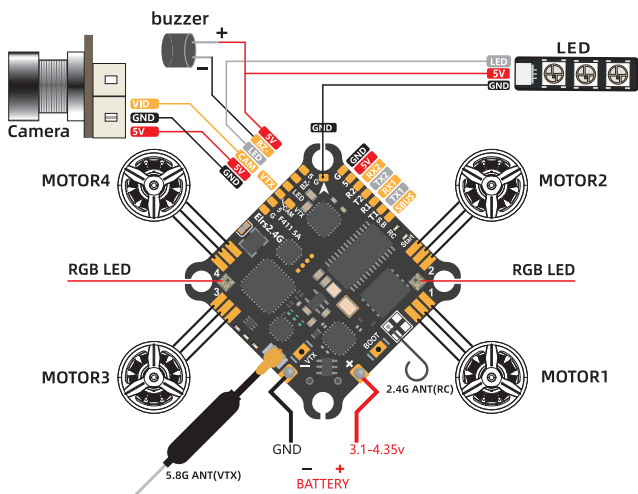


MCU: STM32F411
 GYRO: ICM42688P
 Receiver: ELRS2.4G
 VTX Power: 200mW

Onboard VTX / Onboard Receiver

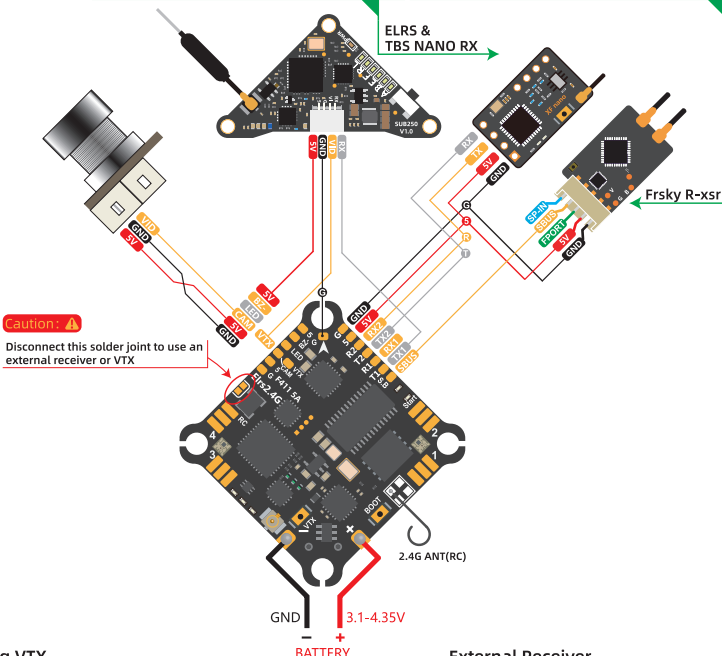
Identifier	Configuration/MSP	Peripherals	Other Features
USB VCP	<input checked="" type="checkbox"/> 115200	Disabled AUTO	<input type="checkbox"/> AIRMODE
UART1	<input type="checkbox"/> 115200	VTX,IRC Tramp AUTO	<input checked="" type="checkbox"/> OSD
UART2	<input type="checkbox"/> 115200	Disabled AUTO	<input type="checkbox"/> DYNAMIC_FILTER



Receiver
SPI RX (e.g. built-in Rx) Receiver Mode
Note: The SPI RX provider will only work if the required hardware is On board or connected to an SPI bus.
EXPRESSLRS SPI Bus Receiver Provider

External VTX / External Receiver

Receiver	Receiver	Receiver
Serial(via UART) Receiver Mode	Serial(via UART) Receiver Mode	Serial(via UART) Receiver Mode
The UART for the receiver must be set to 'Serial Rx'(in the Ports tab) Select the correct data format from the drop-down,below:	The UART for the receiver must be set to 'Serial Rx'(in the Ports tab) Select the correct data format from the drop-down,below:	The UART for the receiver must be set to 'Serial Rx'(in the Ports tab) Select the correct data format from the drop-down,below:
CRSF Serial Receiver Provider	CRSF Serial Receiver Provider	IBUS Serial Receiver Provider



Analog VTX

Identifier	Configuration/MSP	Peripherals
USB VCP	<input checked="" type="checkbox"/> 115200	Disabled AUTO
UART1	<input type="checkbox"/> 115200	VTX,IRC Tramp AUTO
UART2	<input type="checkbox"/> 115200	Disabled AUTO

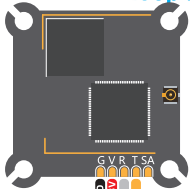
External Receiver

Identifier	Configuration/MSP	Serial RX
USB VCP	<input checked="" type="checkbox"/> 115200	<input type="checkbox"/>
UART1	<input checked="" type="checkbox"/> 115200	<input type="checkbox"/>
UART2	<input type="checkbox"/> 115200	<input checked="" type="checkbox"/>

External HD VTX

Identifier	Configuration/MSP	Serial RX
USB VCP	<input checked="" type="checkbox"/> 115200	<input type="checkbox"/>
UART1	<input checked="" type="checkbox"/> 115200	<input type="checkbox"/>
UART2	<input type="checkbox"/> 115200	<input type="checkbox"/>

HDZERO Whoop Lite



Walksnail VTX

