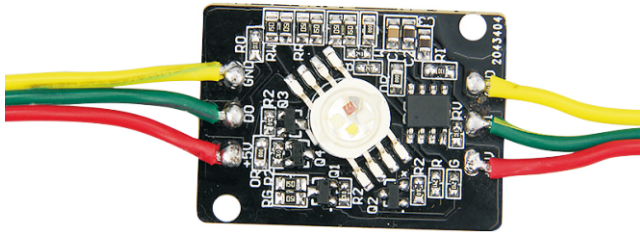


P032 RGBW Digital LED Module

◆ Product Description:



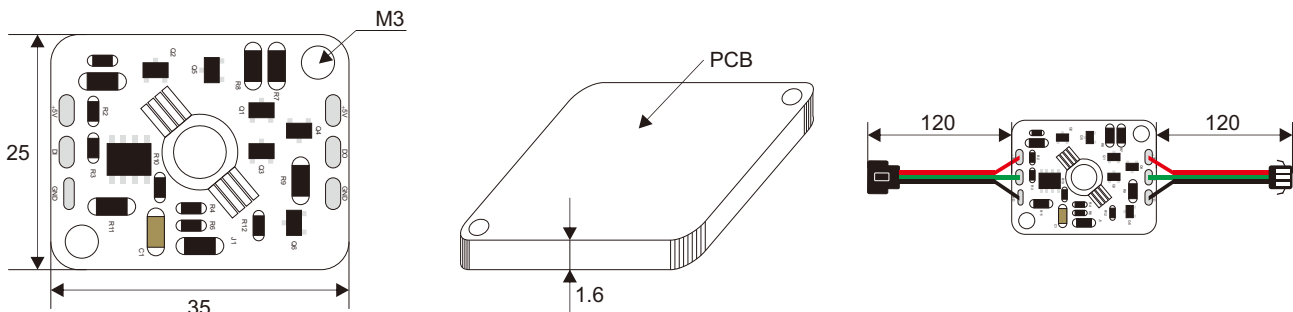
This is a super bright RGBW LED mounted on a Aluminum board backside without a 3M stick suggested to install on any plate for heat dissipation, 2 pcs M3 mounting hole on each conner SM16714 IC control ,it's working with any SPI controller or a DMX decoder constant voltage working, there are 3 pads on each side of board do not confuse the Data in and Data out each module contains a pair of JST connector and packed by An-ti static bag



◆ Product parameter

| | | | |
|----------------|---------------------------------|-----------------------|------------------------|
| Product Number | P032001MA4SD6 | Luminance/pcs | R:51 G:76 B:20 W:102lm |
| Voltage | DC5V | Ra | ≥ 80 |
| Power/pcs | 4W | Beam Angle | 140° |
| SMD Type | Imitation Lumen | Size (mm) | 35 * 25mm |
| LED Qty/pcs | 1 | IP Rate | IP20 |
| Color | RGBW: 3000K/4000K/6000K | Operation Temperature | - 25 ~ 60 °C |
| Pixel/pcs | 1 | Material | Aluminum plate |
| Control | SPI / SM16714 | Cutting Length | / |
| Wavelength | R:620-625 G:520-525 B:460-465NM | Net Weight/pcs | 0.01Kg |

◆ Outline Dimension (unit: mm)



◆ Order number

| | | | | |
|------|------------|-----------|------|------------------|
| DC5V | RGBW+3000K | Black PCB | IP20 | P032001MA4SD6/C1 |
| DC5V | RGBW+4000K | Black PCB | IP20 | P032001MA4SD6/C2 |
| DC5V | RGBW+6000K | Black PCB | IP20 | P032001MA4SD6/C3 |

Note: The parameters are subject to change without notice!